

DATAMAN 280 SERIES FIXED-MOUNT BARCODE READERS

Premium decoding technology
in a compact form factor

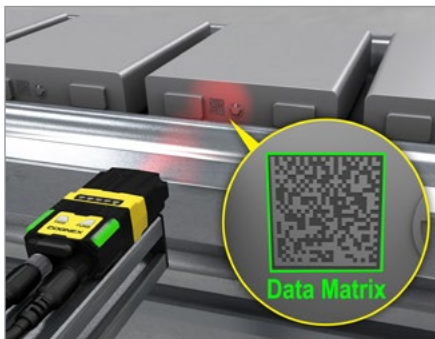
DataMan 280 series fixed-mount barcode readers offer fast decoding, easy setup, and valuable Industry 4.0 features, like web browser connectivity and performance monitoring, in a small form factor. DataMan 280 was engineered to better track and trace items throughout manufacturing and logistics supply chains solving a broad range of tough 1D, 2D, and direct part mark (DPM) code applications.



Solve tough manufacturing and logistics applications

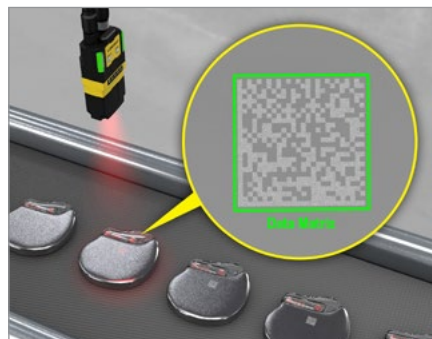
DataMan 280 series barcode readers provide unprecedented read rates on 1D and 2D codes, including label-based and DPM codes.

Automotive DPM code reading



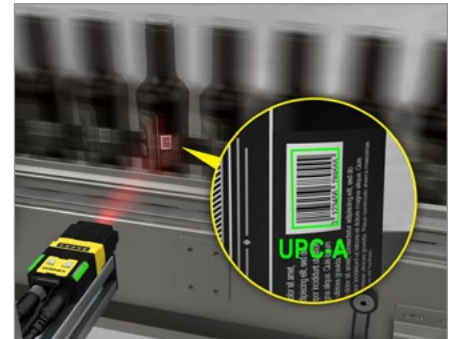
Easily decode difficult DPM codes on challenging automotive part surfaces.

Medical device DPM code reading



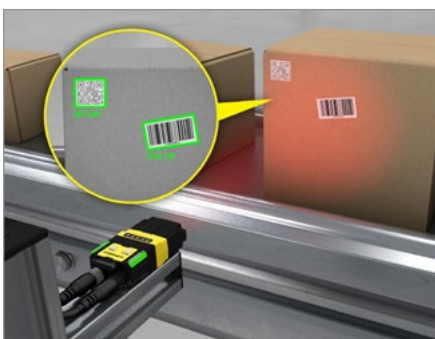
Accurately read and trace small DPM codes on critical medical devices.

High-speed barcode reading



Reliably read every barcode on high speed manufacturing lines.

Multiple barcode reading



Read multiple codes simultaneously in the field of view, and offload images quickly.

Pallet code reading



Read 1D and 2D label-based codes on pallets, even codes behind specular wraps.

Presentation scanning



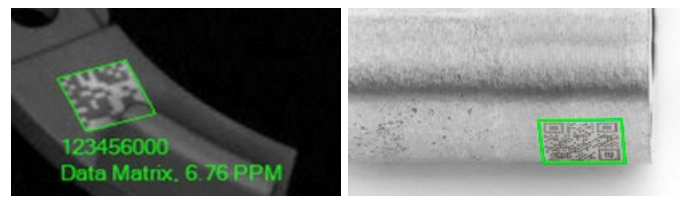
Accurately read user presented codes with a large depth of focus for speedy handling.

Latest Cognex technology improves code handling and coverage

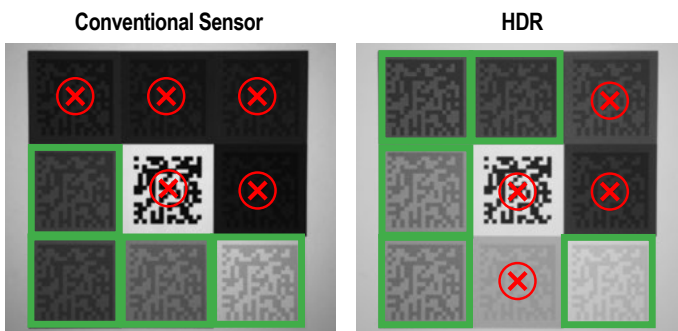
DataMan 280 series barcode readers are optimized with the latest patented decoding algorithms and high-resolution sensors to improve code handling and enable greater coverage for better efficiency.



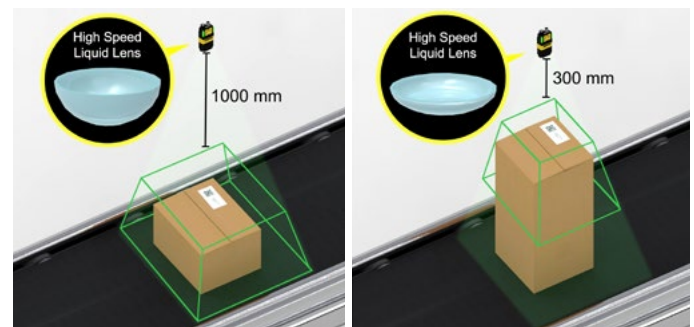
1DMax™ with Hotbars® is optimized for omnidirectional 1D barcode reading, decoding low resolution codes up to 10X the speed of a conventional barcode reader.



2DMax® with PowerGrid® is designed to read 2D codes (including QR codes) with significant damage to or complete elimination of a code's finder or clocking pattern, or quiet zone.



High Dynamic Range (HDR) Technology uses the latest CMOS image sensor, which is more detailed than conventional sensors, enhancing image quality and contrast.



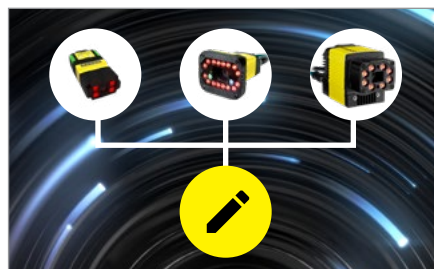
High-Speed Liquid Lens (HSSL) Technology dynamically autofocuses without any mechanical parts to solve high-speed, high-variability applications with fewer cameras in less time.

Advanced features enable easy setup and performance monitoring

DataMan 280 combined with Cognex Edge Intelligence (EI) provides advanced Industry 4.0 features like easy web browser connectivity, device management, and performance monitoring. It allows users to configure multiple devices at once and begin trending important system performance metrics in minutes. Facility managers can identify trends and intervene quickly when dips in performance are spotted.



Connect via web browser



Configure multiple devices at once



Identify performance trends and issues

Handle any barcode reading challenge with modular configuration options

The DataMan 280 is designed to be flexible. The modular hardware and software can be configured to solve any barcode reading challenge. DataMan 280 is compatible with most DataMan 260 accessories.



SPECIFICATIONS

Algorithms and Technologies	1DMax, 2DMax, Hotbars, PowerGrid
Image Sensor	1/3" CMOS
Image Sensor Properties	Diagonal 4.81 mm, 3.45 µm square pixels
Image Resolution	1440 x 1080 pixels
Electronic Shutter Speed	Min. exposure: 29 µs Max. exposure: Up to 10 ms (internal illumination) / Up to 200 ms (external illumination)
Acquisition	Up to 45 Hz
Lens Options	6.2 mm (3 pos or HSSL), 16 mm (manual or HSSL), 6.2 mm UV, 6.2 mm and 16 mm IR, C-Mount accessory
Trigger and Tune Buttons	Yes, with Quick Setup Intelligent Tuning
Aimer	2 green aimer LEDs
Discrete Inputs	2 opto-isolated, 2 configurable
Discrete Outputs	2 opto-isolated, 2 configurable
Other I/O Points	2 user configurable as inputs or outputs
Status Outputs	5 status LEDs, audible beeper, 2 visual indicator lights
Lighting	Modular/field configurable lighting: 4 independently controlled high powered LEDs (red, white, blue, IR, UV), band pass filters and polarization filters available
Communications	Serial and Ethernet interface
Protocols	RS-232, TCP/IP, PROFINET, EtherNet/IP™, SLMP, Modbus TCP, NTP, SFTP, FTP, MRS, CC-Link Java Scripting enabled for custom protocols
Power	24V +/- 10% PoE (Power over Ethernet) Class 3
Power Consumption	≤7.5W
Material	Zinc alloy/aluminum
Weight	6.2 mm: 141 g; 16 mm: 169 g Right angle configuration adds 50 g
Dimensions	Straight configuration 6.2 mm: 75.5 x 42.4 x 23.6 mm Straight configuration 16 mm: 90.6 x 42.4 x 23.6 mm Right angle configuration 6.2 mm: 78.5 x 42.4 x 37.8 mm Right angle configuration 16 mm: 78.5 x 42.4 x 52.9 mm
Operating Temperature	0–40 °C (32–104 °F)
Storage Temperature	-10–60 °C (14–140 °F)
Operating and Storage Humidity	<95% non-condensing
Protection	IP67
RoHS Certified	Yes
Approvals	EU CE, US FCC, TUV CB NRTL IEC 61010, Korea KCC, India BIS

COGNEX

Companies around the world rely on Cognex vision and barcode reading solutions to optimize quality, drive down costs and control traceability.

Corporate Headquarters One Vision Drive Natick, MA 01760 USA

Regional Sales Offices

Americas

North America +1 844-999-2469
Brazil +55 11 4210 3919
Mexico +800 733 4116

Europe

Austria +49 721 958 8052
Belgium +32 289 370 75
France +33 1 7654 9318
Germany +49 721 958 8052

Hungary +36 800 80291
Ireland +44 121 29 65 163
Italy +39 02 3057 8196
Netherlands +31 207 941 398
Poland +48 717 121 086
Spain +34 93 299 28 14
Sweden +46 21 14 55 88
Switzerland +41 445 788 877
Turkey +90 216 900 1696
United Kingdom +44 121 29 65 163

Asia

China +86 21 6208 1133
India +9120 4014 7840
Japan +81 3 5977 5400
Korea +82 2 530 9047
Malaysia +6019 916 5532
Singapore +65 632 55 700
Taiwan +886 3 578 0060
Thailand +66 88 7978924
Vietnam +84 2444 583358

© Copyright 2022, Cognex Corporation. All information in this document is subject to change without notice. All Rights Reserved. Cognex, DataMan, PowerGrid, 2DMax, and Hotbars are registered trademarks of Cognex Corporation. 1DMax and Multi-Reader Sync are trademarks of Cognex Corporation. All other trademarks are property of their respective owners. Lit. No. DM280DS-EN-02-2022

www.cognex.com